



## **Track Forever Enterprise GPS Tracking Software**

**(Sales Offer)**

Updated on: 5<sup>th</sup> July, 2022

Version 1.4

### **INVINCIBLE TECHNOLOGIES (SMC-PVT) LTD**

Invincible People, Invincible Technologies & Invincible Solutions

We develop solutions that reach beyond physical boundaries using state of the art internet, intranet, GSM, GIS, GPS and related technologies.

## Table of Contents

<a href="#">1.Introduction.....</a>	<a href="#">3</a>
<a href="#">2.Track Forever Software.....</a>	<a href="#">4</a>
<a href="#">3.Licensing &amp; Subscription.....</a>	<a href="#">4</a>
<a href="#">4.Benefits.....</a>	<a href="#">5</a>
<a href="#">5.Service Features.....</a>	<a href="#">5</a>
<a href="#">6.Supported Devices.....</a>	<a href="#">6</a>

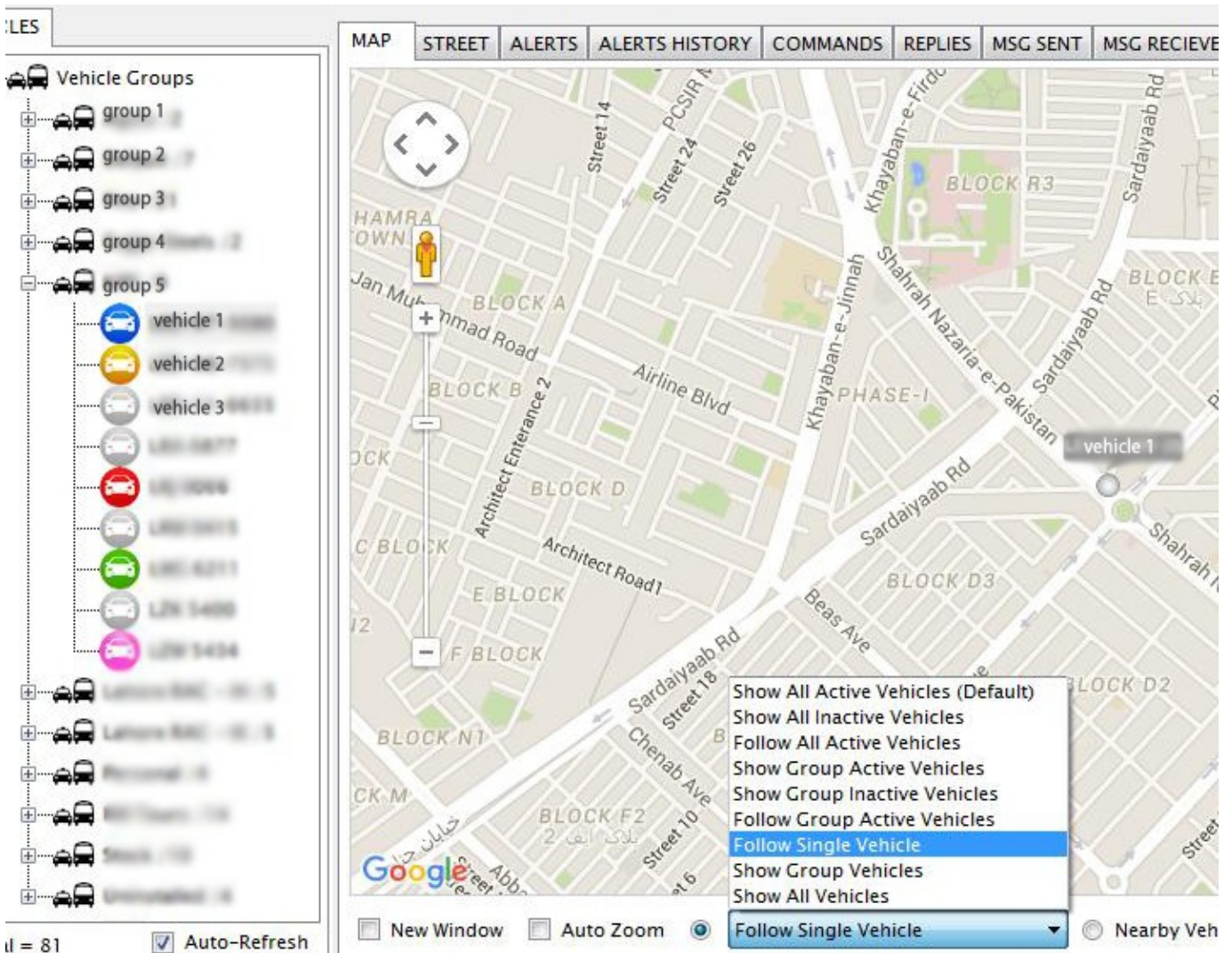
### 1. Introduction

Track Forever is an enterprise grade GPS vehicle tracking and fleet management software solution that provides real time \*asset or vehicle tracking using GSM, GPRS and GPS technologies. It is best fit for companies interested in having independent and self relying GPS tracking capacity. In other words you will own your data and services.

Track Forever software is composed of both windows, web and mobile application. You may host software in local network or deploy in a cloud VPS server. It has built-in support for geo-coding and decoding via landmarks (poi) database. User may configure supported third party service provider for better coverage of location decoding of a target area.

\*in this document asset means a positioning resource

Track Forever Enterprise GPS is a product for companies which may further target their staff, customers or stake holders. Track Forever GPS was awarded “Excellence in Software Development National Award in 2014”.



(Figure 1)

## 2. Track Forever Software

Track Forever Enterprise GPS software package is composed of following components:

1. Track Forever Enterprise Server (GPS Tracking Server)
2. Track Forever Enterprise Client
3. Track Forever Enterprise Modem (Serial Interface)
4. Track Forever Enterprise Administrator
5. Track Forever Web Application(s)
6. Track Forever Mobile Application

Installs on a windows server supported with IIS7 (or later) and MS-SQL Server 2012 (or later). Integrates Google maps, OpenLayers and street view. Users may also integrate their own maps via third party GIS servers (configuration and support charges will apply).

## 3. Licensing & Subscription

Track Forever Enterprise GPS software procurement and running requires a license subscription. Each license subscription is subjected to limited time period of 12 months and number of vehicles. Customer may run software after subscription period for the same number of vehicles without any extra charges. Support agreement may be extended at 40% of original sales price.

No	License Subscriptions	Vehicles	Period (months)	Price (USD)
1	Trial	50	1	0
2	Starter	100	-	625/=
3	Small	300	-	1,500/=
4	Basic	500	-	2,350/=
5	Standard	1000	-	3,750/=
6	Enterprise	5000	-	10,000/=

For larger fleets email at [sales@invincibletec.com](mailto:sales@invincibletec.com). Note that customer must have appropriate network infrastructure to run larger fleets. Visit product websites [www.invincibletec.com](http://www.invincibletec.com), [www.facebook.com/trackforevergps](http://www.facebook.com/trackforevergps) and refer user manuals to understand network requirements. Customer must balance between available network resources and size of the fleet. A device reporting data at 5 minute interval is considered to be at normal frequency, where as a device reporting at 10 seconds or lower interval is in realtime tracking mode. A careful configuration saves both data and cost of service. Remember, devices are always online, connected and realtime, what data has to be communicated is of importance.

Invincible Technologies will provide free integration to existing web portal (websites) of your business to support your brand, service and customer loyalty. This offer applies to Standard and Enterprise subscriptions only.

## 4. Benefits

Track Forever Enterprise GPS software is equipped with all necessary tools to address vehicle tracking and fleet management operations. Here is the list of few important benefits:

1. Own GPS Data & Service
2. Multinational Operational Capacity
3. Multiple Device Support
4. Google Maps and OpenLayers Integration
5. Role Based Approach
6. Scale as You Grow
7. Centralized Operations
8. Less Staff & More Work
9. Automatic Alert Reporting
10. No Need to Remember Device Specific Commands
11. Consistent GUI & User Friendly Operations

## 5. Service Features

Track Forever Enterprise GPS software can maintain a service level with at least following functions and features:

1. Real time vehicle tracking and monitoring.
2. Multiple vehicles follow up on maps and street view.
3. GPS history recording and replaying.
4. Vehicle configurations & reporting.
5. Landmarks / POI management & location coding / decoding.
6. Geo-fence management, application and alert reporting via SMS & Email.
7. Geo-route management, application and alert reporting via SMS & Email.
8. Support for both hardware and software geofences.
9. Ability to check and replay visit history.
10. Alerts processing & reporting via Modems or over internet through third party APIs.
11. Alerts storing and relaying via SMS & Email.
12. Trip Start and Trip End notifications via SMS & Email.
13. SOS alert notification via SMS & Email.
14. Idle alert notification via SMS & Email.
15. Speed Violation notification via SMS & Email.
16. Power Removal notification via SMS & Email.
17. Door open notifications when vehicle is in secure mode via SMS & Email.
18. Ability to remotely enable or disable engine and get alert via SMS & Email.
19. Fleet Access via Web Portal.
20. Locations Summary via Web Portal.
21. Single / Multiple Vehicle Follow Up via Web Portal.
22. Service Level Summary via Web Portal.
23. GPS History via Web Portal.
24. History Replay via Web Portal.
25. Download GPS History in CSV/KML format via Web Portal.
26. Mileage Summary via Web Portal.
27. Trip Reports via Web Portal.
28. Fleet Driving Summary via Web Portal.
29. Complaints & Logs Management.
30. Users, Groups and Roles Administration.
31. Device and Commands Configurations and Management.
32. GSM Modem (USB/Serial) Integration for Texting
33. On premises or cloud hosting capability.

## **6. Supported Devices**

To date software support following GPS tracking devices from different vendors.

1. FM 1100
2. FM 1200
3. FM 4200
4. Ruptela FM
5. Calamp
6. NTT101
7. NTTMicro
8. PF03
9. Trika2
10. Locator
11. Enfora MT
12. iTracGold
13. SG VT 02
14. SG VT 05
15. TK 102
16. TK 103
17. G 01
18. G 02
19. G 02M
20. G 05
21. TK 100
22. G 200
23. KX 402

\*Additional devices can be integrated by paying integration charges.

